

LINEARPOTI

Linearpotentiometer, Rectangular Housing

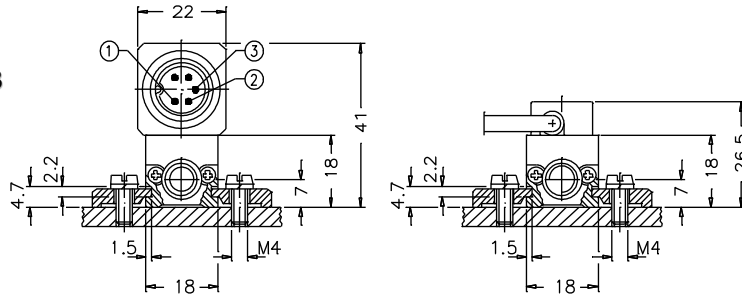


Series LRW2 LRW3

- **Double support of the control rod and return spring**
LRW2 with Ball Tip 10/25/50 mm Stroke
LRW3 with Bearing Tip 25/50 mm Stroke
- **Range 10 - 50 mm**
- **Protection IP 40**
- **Displacement speed <10 m/s**
- **Linearity up to $\pm 0,1\%$**
- **Infinite resolution**
- **Working temperature -30...+100°C**
- **Lifetime 100×10^6 cycles**
- **Electrical Connection**
3-core shielded cable
5-pin circular connector

Dimensions and electrical data

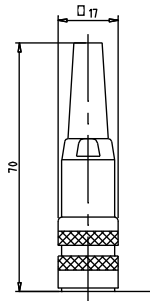
LRW2 and LRW3



Connection and Accessories

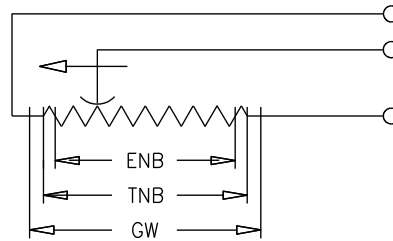
Accessories

mating connector IP40



CON011

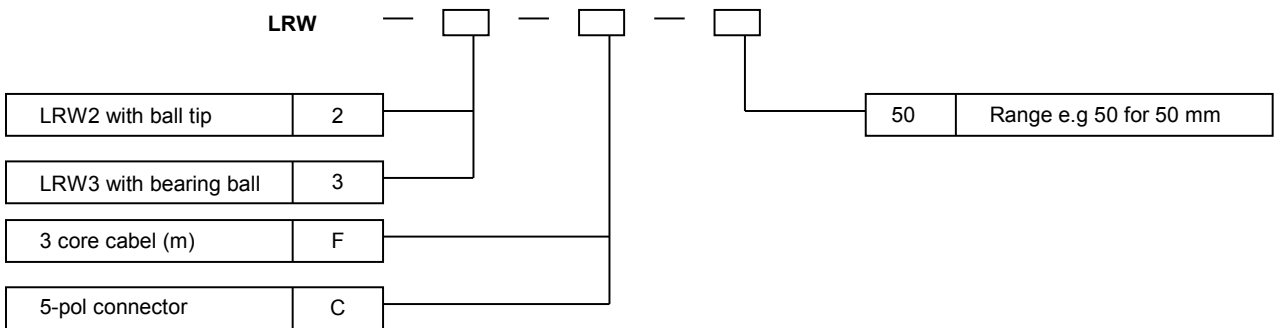
Electrical connection



connector output	cable output
3 (+)	blue
2	yellow
1 (-)	brown

view on connector

Order Code



These data can be changed without any advance notice

WayCon Positionsmesstechnik GmbH

e-mail: info@waycon.de
internet: www.waycon.de



Head Office

Mehlbeerenstraße 4
82024 Taufkirchen
Tel. +49 (0)89 67 97 13-0
Fax +49 (0)89 67 97 13-250

Office Köln

Auf der Pehle 1
50321 Brühl
Tel. +49 (0)2232 567944
Fax +49 (0)2232 567945